

Programme

Day 1 (Taipei)

Monday, 22 September 2014	
(all day)	Delegate arrivals in Taipei (or earlier), hotel check-in and optional Taipei city tour
17:30 - 21:00	<p>Reception – Taipei – Songs of Islands Venue: NTU Guest Hotel - 'Just Sleep'- at 2nd Floor- Just Italian Restaurant. http://www.justsleep.com.tw/NTU/en/intro</p> <p>Greetings & Dinner Reception - Organizing Committee (President of NPU Prof. Ying-Wei Wang, Prof. Grant McCall, Representative of Penghu County Mr. Kuo-Ching Yeh (葉國清副處長))</p> <p>Songs of Islands – Songs about island life and their lyrics (Facilitated by Anna & Godfrey Baldacchino, Malta)</p> <p>Oryu, Yoko (Kobe University, Japan). Contemporary Elegy of <i>Adieu Foulard</i>, <i>Adieu Madras</i> and French diaspora from the French Overseas Departments in the Caribbean.</p> <p>Persoon, Gerard A. (Leiden University, The Netherlands). Frightened by the Eagle: Songs from the Island of Siberut (Indonesia).</p> <p>Royle, Stephen A. (Queen's University Belfast, Northern Ireland, UK). 'Oh the Empire, it is finished' – 'England's got Rockall'.</p> <p>Syaman Rapongan (Orchid Island, Taiwan). The Songs of Orchid Island - Flying fish and the Ballad of Tau- <i>Praise the Ocean</i></p> <p>Music and Songs in various languages</p>

Day 2

Tuesday, 23 September 2014	
10:35 - 11:10	Check-in at Taipei SongShan Airport (domestic airport) Flight from Taipei to Magong City, Penghu Archipelago
11:20 - 12:00	Visiting Penghu National Scenic Area Administration
12:15 - 13:40	Hotel check-in, lunch, move to conference venue at NPU
14:00 - 14:30	<ul style="list-style-type: none"> • Opening Ceremony Grant McCall, Daniel TL Hung (洪棟霖處長) - Greetings from President of ISISA Prof. Grant McCall, Deputy Minister of National Development Council Dr. Wan-Hsian Huang (黃萬翔副主委), Deputy Magistrate of Penghu County Mr. Yung-Tai Lu (呂永泰副縣長), Chairwoman of Penghu County Council Ms. Liu Chen, Chao Ling (劉陳昭玲議長), and President of Penghu University of Science & Technology Prof. Ying-Wei Wang (王瑩瑋校長) - Student Scholarship Awards - Greetings to the 20th Anniversary ISISA
14:30 - 16:00	<p><i>Keynote Speeches Chairs: Beate Ratter, David Chang-Yi Chang (張長義教授)</i></p> <ul style="list-style-type: none"> • Keynote: Prem Saddul, Mauritius - Barbados+20 – Island connections and the UN Year of Small Island Developing States • Keynote: Mark Bynoe, CCCCC, Belize - Small Islands and Climate Change – adaptation and innovation



ISISA Islands of the World XIII

Small is Beautiful: Island Connections and Innovations

Penghu Archipelago, Taiwan, 22-27 September 2014

	<ul style="list-style-type: none"> • Keynote: Eric Clark, Lund University, Sweden - Small is Beautiful - Island development as if people matter
16:00- 16:30	Venue tea break
16:30 - 17:40	<p>20th Anniversary ISISA – Islands of the World conferences 1994-2014 <i>Grant McCall and Beate Ratter - ISISA past and future – Sharing Experiences: From Okinawa to Penghu</i></p> <p>Special Guests: Hiroshi Kakazu (Okinawa 1994), Prem Saddul (Mauritius 1998), Graeme Robertson (Isle of Skye 2000), Godfrey Baldacchino & Laurie Brinklow (Prince Edward Island 2002), Kuo-Chung Lee, Chao-Jin Chen & Huei-Min Tsai (Kinmen Island 2004), Clyde Sakamoto (Maui 2006), Ko Chang Hoon (Jeju 2008), Karin Topsø Larsen (Bornholm 2010), Dana Lewis-Ambrose (Tortola 2012), Daniel TL Hung (Penghu Archipelago 2014)</p> <ul style="list-style-type: none"> • Exhibition Opening and get-together
18:30 - 20:30	Welcome Banquet (Pescadores Resort, Magong City)

Day 3

Wednesday, 24 September 2014	
09:00 - 10:30	<p>Concurrent Sessions 1. A-1, B-1, C-1, D-1, E-1, F-1</p>
10:30 - 11:00	Refreshment break
11:00 - 12:30	<p>Concurrent Sessions 2. A-2, B-2, C-2, D-2, E-2 F-2</p>
12:30 - 13:30	Lunch
13:30 - 15:00	<p>Plenary Session, Panel A: Innovation and Island future – Green technology, tourism and sustainability (Chair: Robert Y.S. Chen 陳永森)</p> <p>Facilitator: Karin Topsø Larsen, Bornholm, Denmark</p> <ul style="list-style-type: none"> • Keynote: Godfrey Baldacchino, Malta – The Future and Islands <p>Panelists: Clyde Sakamoto, Hiroshi Kakazu, John Liu, Godfrey Baldacchino</p>
15:00 - 18:00	<p>Penghu Main Island Culture & Nature Site Visits Continued by a beach party and social events</p>
18:00 - 21:00	Beach party and social events (return to hotel 21:00)

Day 4

Thursday, 25 September 2014	
09:00 - 10:30	<p>Concurrent Sessions 3. A-3, B-3, C-3, D-3, E-3 F-3</p>
10:30 - 11:00	Refreshment break
11:00 - 12:30	<p>Concurrent Sessions 4. A-4, B-4, C-4, D-4, F-4</p>
12:30 - 13:30	Lunch



ISISA Islands of the World XIII

Small is Beautiful: Island Connections and Innovations

Penghu Archipelago, Taiwan, 22-27 September 2014

13:30 - 15:00	<i>Plenary Session, Panel B: Journey across home – Migration as solution?</i> Facilitator: Arlene Holmes-Henderson, UK <ul style="list-style-type: none"> • <i>Keynote: Jonathan Pugh, UK – Being in exile at home: what is ‘Caribbean’ development?</i> Panelists: Elaine Stratford, Dana Lewis-Ambrose, Jonathan Pugh, Bo-Wei Chiang
15:00 - 15:30	<i>Refreshment break</i>
15:30 - 17:00	<i>Concurrent Sessions 5.</i> A-5, B-5, C-5, F-5
17:30 - 20:30	<i>Free time (Visiting Magong main street: Jhong Jheng Rd.)</i>

Day 5 (Chi-Mei Island, Penghu)

Friday, 26 September 2014	
08:30 - 10:00	<i>Boat trip to Chi-Mei Island</i>
10:00 - 12:00	Greetings from island communities and schools Refreshment break Island at a glance: Prehistoric site, coastal geological formations
12:00 - 13:00	Lunch – island food
13:00 - 14:30	Island Community Forum: ‘Small is beautiful’ – nature-culture interactions, community-based visions & innovation (Prof. Hiroshi Kakazu, Huei-Min Tsai) <ul style="list-style-type: none"> • <i>Keynote: Clyde Sakamoto, Maui, U.S.A. – Progress in sustainability: the impact of ISISA on our campus, island and state since 2006</i> • <i>Presenters:</i> Huei-Min Tsai, Horigome Kenji, Chung-Twn Kuo, Amy Latva-Kokko, Kenneth Kao - Toward Island Sustainability: Satoyama-Satoumi nature-culture interactions and the sustainability plans on Chi-Mei Island
14:30 - 16:00	Site visits: <i>Adaptation and innovation on small islands:</i> stone-walled vegetable gardens, arid resistant crops, stone fish weirs on the tidal zone, wind resistant traditional houses, renewable energy, traditional fishery vs. aqua-culture farm, issues of coastal management, the harbor and tourism
16:00 – 17:30	Boat trip back to main island of Penghu
18:30 – 20:30	Farewell Banquet

Day 6

Saturday, 27 September 2014	
09:00 - 11:00	INTERNATIONAL SMALL ISLANDS STUDIES ASSOCIATION <ul style="list-style-type: none"> • General Meeting – Election of new ISISA Executives, future sites etc. Facilitators: Graeme Robertson, UK, and Stephen Royle, Northern Ireland
11:00- 11:30	Refreshment break
11:30 - 12:30	• <i>Conference Conclusion</i> Closing Ceremony
12:30 - 14:00	Lunch
15:00 -	Flights from Penghu Island to Taipei



Concurrent Sessions

	Room A	Room B	Room C	Room D	Room E	Room F
Wednesday, September 24						
09:00 - 10:30	A-1	B-1	C-1	D-1	E-1	F-1
11:00 - 12:30	A-2	B-2	C-2	D-2	E-2	F-2
Thursday, September 25						
09:00 - 10:30	A-3	B-3	C-3	D-3	E-3	F-3
11:00 - 12:30	A-4	B-4	C-4	D-4		F-4
15:30 - 17:00	A-5	B-5	C-5			F-5

Concurrent Sessions (90 minutes each session = 4 presentations at 15 minutes each plus 5 minutes questions, introduction/conclusion by chair)

A sessions: *Small is beautiful – Island studies and cultures*

B sessions: *Small is dangerous – Island natures and ecology*

C sessions: *Small is challenging – Island economies and management*

D sessions: *New waves in the ocean – Island communities and livelihoods*

E sessions: *New winds for islands – Island technology and innovation*

F sessions: *Taiwan Perspectives – Island futures and planning* (in Chinese, 中文場次)

Room A

A sessions: “Small is beautiful” – Island studies and cultures

A-1 Literature and poetics (Chair: Hui-Mei Yao, NPU., 姚慧美副教授)

Brinklow, Laurie (University of Tasmania, Australia). My island is the house I sleep in at night: The poetics of island space.

Graziadei, Daniel, Hartmann, Britta, & Riquet, Johannes (University of Munich, Germany; University of Vechta, Germany; University of Zurich, Switzerland). The Politics of Islands in the Literary Imagination.

Hartmann, Britta (University of Vechta, Germany). Pursuing an Island Fiction: The Poetics Surrounding Robinson Crusoe.

Riquet, Johannes (University of Zurich, Switzerland). Caught Between Water and Land: The Politics and Poetics of Angel Island.



A-2 Language, culture, and history (Chair: Su-Hsin Lee, National Quemoy U., 李素馨教授)

Currie, Mark (University of Prince Edward Island, Canada). Those who repeat history are not always doomed: The preservation of culture and nature to bolster Dominica.

Stratford, Elaine (University of Tasmania, Australia). The body, the island, the water: critical reflections on the geopolitics of forms of drowning.

Hopkins, Mark (Hong Kong University of Science and Technology, Hong Kong). A parochial lost cause? The micro-politics of language revitalization initiatives in Jersey (British Channel Islands).

Mitchell, Edward S. (School of Languages and Translation, Macao Polytechnic Institute Macau). Chabacano Ternateño: the perseverance of a minority language on a small island. Language choice and attitudes among the Chabacano speakers of Ternate, Luzon Island, Philippines.

A-3 Traditions and practices (Chair: Min-Hua Wu, NPU., 吳敏華助理教授)

Baldacchino, Anna (Malta College of Arts, Science & Technology, Malta). Traditional Dishes or Fusion Cuisine? An Island Journey.

Hsieh, Kai H, Hsu, Kuang-Tsung, & Wang, Chung-Ming (Matsu National Scenic Area Administration, Taiwan). Traditional Eastern Fujian Style Stone House Preserving Project in Matsu Islands.

Koike, Haruko, Oleson, Kirsten, Friedlander, Alan, & Golbuu, Yimnang (University of Hawaii, USA). Creating a Common Ground for Discussion: New Fishery Management Model that Considers Fishers, Ecotourism, and Cultural Subsistence Use.

Lee, Ming-Ju, & Lu, Cheng-Hao (National Penghu University of Science and Technology, Taiwan). The distribution and characteristic of Penghu fish weirs: An investigative review.

A-4 Nissology I – Studying Islands on their own terms (Chairs: Grant McCall; Chun-Chieh Chi, National Dong-Hwa University, 紀駿傑教授)

Depraetere, Christian (Institut de Recherche pour le Développement, Montpellier, France). A general outlook on Nissology as the science of islands.

Bernardie-Tahir, Nathalie (Université de Limoges, France). French geographers and islands: From the idealization of the field to the denial of the object - Epistemological approaches.

Baldacchino, Godfrey (University of Malta, Malta). Notes from the Sicilian Archipelago.

Grydehøj, Adam (Island Dynamics, Copenhagen, Denmark). The Other Kind of Island: Putting the Urban into Nissology, and Why Big Can Be Beautiful Too.

A-5 Nissology Studies II– Studying Islands on their own terms (Chair: Chun-Chieh Chi, National Dong-Hwa University, 紀駿傑教授)

Graziadei, Daniel (Ludwig-Maximilians-Universität München, Germany). Nissopoiesis: the creation of islands through words.

Nagashima, Shunsuke (Japan Society of Island Studies & Kagoshima University, Japan). From Nissology to Nissology: Progress of Japan Society of Island Studies and Future Prospects.

Nakachi, K. (Osaka University, Japan). Okinawa Islands: Geographical Superiority and



Inferiority in International Relations.

Wu, Min-Hua, Lee, Chung-Han, Chen, You-Hsuan, Chu, Yi-Chi, Lin, Chia-Hao, Chung, Hsin, Huang, Li-Ting (National Penghu University of Science and Technology, Taiwan). A Study on the English Translation of the Praise Ballads in Penghu.

Room B

B sessions: Small is dangerous - Island natures and ecology

B-1 Ecology and resource use (Chair: Bing-Huang Chen, Tunghai U., 陳炳煌教授)

Kawai K, Kobari T, Manabe H, Torii T, Nishimura Satoru, & Veitayaki Joeli (Kagoshima University, Japan). Resource Use and Human Disturbance in Coastal Ecosystems: A Case Study of Viti Levu Island, Fiji.

Cheng, I-Jiunn (National Taiwan Ocean University, Taiwan). Ecological study of nesting green sea turtles at Wan-an Island, Penghu Archipelago.

Nishimura, Satoru, Yamamoto, Sota & Kawanishi, Motohiro (Kagoshima University, Japan). A scenario for more efficient use of giant swam taro plantation under socio-economic change: A case study of Pingelap Island, Federated States of Micronesia.

Kawanishi, Motohiro, Yamamoto, Sota & Nishimura, Satoru (Kagoshima University, Japan). Diversity and distribution patterns of useful plants in inhabited area of Pingelap Island, Federated States of Micronesia.

B-2 Islands at risk (Chair: Shih-Chian Lin, National Quemoy U., 林世強教授)

Nagashima, Shunsuke (Kagoshima University, Japan). Restoration of Small Island Societies after the East Japan Great Earthquake.

Hartle, Jeffery A. (University of Central Missouri, USA). Challenges of Island Emergency Response: Comparing Socio-technical Systems.

Siedschlag, Daniela (Helmholtz-Zentrum Geesthacht, Germany). Endangered by smallness: the concept of emotional vulnerability.

Takahashi, Minori (Hokkaido University, Japan). Self-government and climate change: 'Autonomy in External and Internal Relations' in Greenland.

B-3 Climate change policy and adaptation (Chair: Shih-Chian Lin, National Quemoy U. 林世強教授)

Holdschlag, Arnd (University of Hamburg, Germany). SIDS in Climate Diplomacy: Strategies and Priorities.

Papoutsaki, Evangelia & Kailahi, Sandra (Unitec, Auckland, New Zealand). Communicating Climate Change, Disaster and Crisis in the Pacific: A Regional Appraisal.

Kliot, Nurit (University of Haifa, Israel). Management and Mismanagement of Water Resources on Small, Warm Water SIDS - with Emphasis on Climate Change Effects.

Petzold, Jan (University of Hamburg, Germany). Social capital and adaptation to sea-level rise on the Isles of Scilly, UK.



B-4 Managing natural resources (Chair: Su-Bng Chang, National Taiwan Normal U., 張素玠教授)

Torii T, Kitolelei K, Nishimura Satoru, Kawai K & Kobai T. (Kagoshima University, Japan). The Current Situation and Challenges of Fisheries Resource Management System in Fiji: A Case Study of Nakorokura Village.

Wu, Yung-Lin (Chinese Culture University, Taiwan). A Lohas Perspective Study of Marine Ranch in Penghu Archipelago, Taiwan.

Yu, Shyi-Liang, Chu, Ying-Chien, & Tsai, Chia-Wen (National Penghu University, Taiwan). A Study of the Sustainable Development of Recreational Fishery in Penghu Bay

Chen, Benkang, Yen, Yichi, Huang, Ginren, Zhou, Lizou, Guo, Licho, Wang, Fonren & Lin, Tsaichun (Geology Association, Taiwan). The Strategies of Development for Penghu Geo-park.

B-5 Island resilience (Chair: Min-Hwang Liang, National Dong-Hwa U., 梁明煌教授)

Bates, Jayne & Roberts, Kristina (Mayor, Kangaroo Island Council, Government of South Australia). The Kangaroo Island Story: Survive, Adapt, Thrive.

Krishnapillai, Murukesan (College of Micronesia, Yap Campus, Federated States of Micronesia). Climate-Smart Family Farming for Food Security in Small Islands.

Marto, Ricardo, Alvarez, Lourdes & Suarez, David (Inter-American Development Bank). Big impacts, small territories: Building resilience in the Caribbean, while moving towards a low-carbon economy.

Wu, Chia-Chi & Tsai, Huei-Min (University of Bonn, Germany; National Taiwan Normal University, Taiwan). Tourism development and social resilience in marine protected area: a case study of Four Islands of Southern Penghu.

Room C

C sessions: Small is challenging – Island economics and management

C-1 Cross jurisdictional challenges (Chair: John Liu, National Taiwan U., 劉可強教授)

Sammler, Katherine (University of Arizona, USA). New waves in the ocean: cross-jurisdictional challenges and collaborations.

Carmichael, Cheryl (University of Prince Edward Island, Canada). Benefits of Preferential Trade Agreements for the Small Island Developing State: A Case Study on Economic Growth within the SPARTECA and PICTA Trade Agreements.

Grydehøj, Adam (Director of Island Dynamics, Denmark). Moving the Centre to the Periphery: Autonomy, Technology, and Societal Change in Greenland.

Li, Zhi-Jun (Xiamen University, China). The Location of Marine Political Geography and the Governance of Qing Dynasty for the Penghu Sub-prefecture: Based Mainly on state bailout of storm damage.



C-2 Economic development and challenges (Chair: John Liu, National Taiwan U., 劉可強教授)

Karides, Marina (University of Hawaii at Hilo, USA). Convivial Economics and the Subaltern Island.

Preston, Nathaniel (University of Prince Edward Island, Canada). Lost Mermaids.

Lay, Suhjen (National Penghu University of Science and Technology, Taiwan). Penghu Economic Development: Green Gold - Seaweed Value Chain Analysis.

Juang, Yih-Ching (National Penghu University of Science and Technology, Taiwan). Sustainable Development for Port Systems in Penghu.

C-3 Development policies and strategies (Chair: Bowei Chiang, National Taiwan Normal U. 江柏煒教授)

Lourens Broersma, Nora Mehnen & Jouke van Dijk (University of Groningen, The Netherlands). Socio-economic developments in the Wadden area, Netherlands.

Tsai, Fuchang, Lee, Peijean, Wu, Chialing & Lee, Yenju (National Taiwan University, Taiwan). Trans-island cooperation platform for Kinmen, Penghu and Matzu.

Mukhopadhyay, Malay, Sarkar, Manisha Deb & Roy, Saswati (Visva-Bharati Central University, Santiniketan, West Bengal, India). Induced developmental policies in two islands of Andaman and Nicobar Archipelago, India: A dilemma in prognostication.

C-4 Economy of smallness (Chair: Huei-Min Tsai, National Taiwan Normal U., 蔡慧敏教授)

Fahie, Derek (Long Look-Tortola, the Virgin Islands). To what extent could an intangible concept be transformed as a tangible product on the commercial market? A case study of the Deputy Governor's History Research Programme in the Virgin Islands.

Li, Sui-Ling (National Penghu University of Science and Technology, Taiwan). Estimating and Forecasting Air Trip Distributions of Off-shore Island Residents in the Busy/Off-Seasons.

Spilanis, Ioannis (University of the Aegean, Greece). The attraction of small islands to business and residents: a European perspective.

Kao, Shao-Yuan (National Penghu University of Science and Technology, Taiwan). The Effect of Image and Travel Satisfaction upon Siyu Township Tourism of Penghu.

C-5 Island Tourism (Chair: Shyi-Liang Yu, NPU., 于錫亮教授)

Rolle, Sophia A., Minnis, Jessica & Bennett, Ian Bethell (The College of the Bahamas). The Impact of Tourism on Bahamian Society, Economy and Culture: A study of Bimini, Abaco and Mayaguana.

Fricke, Jörn (NHTV Breda, Academy of Hospitality and Facility Management, The Netherlands). Authenticity in commercializing culture tourism destinations on islands: the Case of Georgetown (Penang).

Fahie, Marsel (Long Look-Tortola, the Virgin Islands). To What Extent Could the Virgin Islands Cruise Tourism Industry Reduce the Risk to Business Continuity in the Event of a Natural Disaster or Man-Made Crisis?



Room D

D sessions: New waves in the ocean – Island communities & livelihood

D-1 Sustainability on islands (Chair: Ju Chou, National Taiwan Normal U., 周儒教授)

Lewis-Ambrose, Dana & Hodge, Derry (H. Lavity Stouff Community College, Tortola, British Virgin Islands). Responding to the Needs of a Small Island Community: Developing a Renewable Energy Training Programme in the Virgin Islands.

Hatayama, Yuki (Kagoshima University, Japan). How to counterbalance diverse issues of industrial development and nature protection in Kikai, the Amami Islands, Japan.

Huang, Wen-Hua & Lee, Su-Hsin (National Taiwan Normal University, Taiwan). Analysis of Lieyu Governance from Perspective of Place.

Tsai, Liang & Lin, Cheng-Shih (National Taiwan University, Taiwan; National Quemoy University, Taiwan). The Negative Impacts of State Subsidies on the Sustainability of Islands.

D-2 Local knowledge and economy(Chair: Ju Chou, National Taiwan Normal U., 周儒教授)

Breckwoldt, Annette (Leibnitz Centre for Tropical Marine Ecology, Bremen, Germany). The importance of local perceptions for small island marine resource use systems, with examples from Gau Island (Lomaiviti, Fiji).

Yamamoto, Sota, Kawanishi, Motohiro & Nishimura, Satoru (Kagoshima University, Japan). Food Security on Pingelap Island, Pohnpei State, Federated States of Micronesia.

Du, Yu-Han & Yu, Shyi-Liang (National Penghu University of Science and Technology, Taiwan). From the mountain to the island: Cross cultural adaptation and cultural reconstruction of indigenous migration in Penghu, Taiwan.

Hung, Pei-Hsun, Chen, Wei-Lin, Hsu, Pei-Hsin & Chao, Chih-Liang (Providence University, Taiwan). Spatial Evidences on Residential Perceptions toward Island Sustainable Development.

D-3 Island futures and connections (Chair: Su-Bing Chang, National Taiwan Normal University, 張素玢教授)

Larsen Topsø, Karin (Centre for Regional and Tourism Research & Aalborg University, Denmark). From Guilt to Engagement: out-migrated youth and their engagement in their home communities.

Austin, Linda (Australia). Paddling a balanced canoe: Voice and listening in advancing women's rights in the Pacific Islands.

Leijssen, Channa van & Tsai, Huei-Min (Leiden University, Netherlands; National Taiwan Normal University, Taiwan). Youth Island visions: Future dreams versus reality voiced by indigenous youngsters on Lanyu.

Holmes-Henderson, Arlene (University of Glasgow, UK). Heritage language stabilization and revitalization: what can Scotland learn from Hawaii?



D-4 Community communication and management (Chair: Chen-Hong Li, NPU., 李陳鴻副教授)

Lewis-Ambrose, Dana, Hodge, Derry & Dawson, Karl (H. Lavity Stoutt Community College, Tortola, British Virgin Islands). Financing within Small Island Community Colleges: Evaluating a Programme and Training Development Fund as a viable Alternative Model.

Kanayama, Tomoko (Institute of Advanced Media Arts and Sciences, Japan). Community Radio as Cultural Function for the Amami Islands of Japan.

Kang, Youngpil, Lee, Hanyoung, Kim, Daejoon & Kim, Jihee (Jeju National University, Korea). Role of Jeju Documentary films as Communicating means around MPAs.

Roy, Saswati (Visva Bharati Central University, Santiniketan, West Bengal, India). Extinction of a Pristine Livelihood in Response to Development: A Reciprocation from the Onge Community of Little Andaman Island, India.

Room E

E sessions: New Winds for Islands - Island technology and innovation

E-1 Small island technological fitness (Chair: Shyi-Liang Yu, NPU., 于錫亮教授)

Kakazu, Hiroshi (University of the Ryukyus, Japan). Okinawa's Green Technologies and Sustainable Development.

Uehara, Hideki (Meisei University). Seizing Opportunities and Challenges for Sustainable Small Island Economies: A Case of Development and Innovation in Okinawa

Matsumura, Yuko. (Osaka University, Japan). An overall research about energy development in remote islands in Japan: Case studies in islands without interconnection to mainland.

Wang, Ying-Wei, Fang, Shyang-Chyuan, Han, Tzeu-Chen, Kang, Huan-Chen & Lu, Cheng-Hao (National Penghu University, Taiwan). A hour-based electric-scooter rental model for island residents and tourists: The test case of NPUST.

E-2 Technical Innovations (Chair: Yueh-Chiu Wang, NPU., 王月秋副教授)

Ku, Fu-Neng (National Penghu University of Science and Technology, Taiwan). Model of Gravity blades.

Liao, Yi-Hung, Hsu, Chia-Chuan & Jhu, Jia-Yi (National Penghu University of Science and Technology, Taiwan). Development and Analysis of a Contactless Electrical Energy Transmission System for Island Power.

Lin, Wun-Hao, Wu, Hao-Ming, Wu, Wun-Chin & Wu, Hao-Chuan (National Penghu University of Science and Technology, Taiwan). Problems and Countermeasures of Small Wind Turbine Systems.

Tan, Paul Juinn Bing, Hsu, Ming-Tai & Hsu, Ming-Hung (National Penghu University of Science and Technology, Taiwan). Fault diagnosis of wind power generation systems.

E-3 Transport and energy (Chair: Yueh-Chiu Wang, NPU., 王月秋副教授)

Li, Sui-Ling, Hung, Fu-Jung Chris & Lin, Jing-Zhen (National Penghu University of Science and Technology, Taiwan). Measuring and Evaluating Route Selections of Off-shore Island Tourism Bus.



Wang, Yu-Jie & Han, Tzeu-Chen (National Penghu University of Science and Technology, Taiwan). Non-radial DEA measure for sustainability evaluation of small islands: Considering on inefficiency of undesirable outputs for electric vehicle.

Wu, Wun-Chin, Liao, Yi-Hung & Shya, Ming-Horng (National Penghu University of Science and Technology, Taiwan). Effect of National Penghu University of Science and Technology Windmill Park on the Domestic Small Wind Turbine Development.

Room F

F sessions: Taiwan Perspectives – Island futures and planning (in Chinese)

台灣觀點：島嶼未來的展望與規劃（中文發表）

F-1 Planning for Sustainability (Chair: Chyuan Yuan Shiau, National Ocean U., 蕭泉源教授)

Daniel TL Hung (Economic Affairs Department, Penghu County Government), Sustainable Development Planning of Penghu Island. (洪棟霖, 澎湖島嶼永續發展規劃, 澎湖縣政府建設處處長)

Chang, Lung-Cheng & Chen, Robert Y.S. (Penghu National Scenic Area Administration, Tourism Bureau; National Kaohsiung Normal University, Taiwan). The Analysis of Development Strategies of 'Alternative Tourism' in Penghu Archipelago. (張隆城、陳永森, 澎湖群島「替代觀光」發展策略分析, 澎湖國家風景區管理處處長、高雄師範大學地理系)

Jung-Fu Huang, Chia-Fa Li & Pao-Jen Chang (Kinmen County Government), Ecological and Conservation of The Horseshoe Crab in Kinmen. (黃榮富、李佳發、張寶仁, 三棘蠶在金門的生態與保育, 國立高雄海洋科技大學、金門縣政府建設處)

Alex Ya-Ning Yen (China University of Technology), The preparation for World Heritage nomination in Kinmen. (閻亞寧, 金門申請登錄世界遺產的整備工作, 中國科技大學建築系)

F-2 Connections and influences (Chair: Hsuan-Shih Lee, National Ocean U., 李選士副校長)

Hsu-Fu Yang & Cheng-Chi Chung (Dept. of Shipping and Transportation Management, National Taiwan Ocean University), High Speed Craft Service Market and Its Influence in Taiwan. (楊許虎、鍾政棋, 福建海峽高速客滾航運有限公司臺灣分公司、國立臺灣海洋大學航管系)

Tzeu-Chen Han, Arthur Sung & Chien-Chang Chou (Department of Shipping Technology, National Kaohsiung Marine University), Small Island Logistics Connection. (韓子健、周建張, 小島物流連結, 國立澎湖科技大學、國立高雄海洋科技大學)

Li-Hui Chang, Cheng-Shih Lin & Tsui-Wen Wang (Department of Tourism Administration, National Quemoy University), A Study on the Consumer Behavior's Characteristics of Tourists in Kinmen: Trend Analysis Orientation. (張梨慧、林正士、王翠雯, 離島觀光旅遊消費行為模式之研究：趨勢研究取向, 國立金門大學觀光管理學系)

Shiyi Bei (Department of Taiwanese Literature, National Cheng Kung University), The original culture and natural ecosystems of island's food and species literature. (石宜蓓, 島嶼食物和物種書寫的在地文化與生態, 國立成功大學台灣文學系)



F-3 Environmental education and resource management (Chair: Sho-Yuan Kao, NPU., 高紹源助理教授)

Min-Hwang Liang (Department of Nature Resources and Environment, National Donghua University), Facilitation and Mentoring for Environmental Education of Islands of Taiwan. (梁明煌, 台灣島嶼的環境教育促進與輔導, 東華大學自然資源與環境學系)

Chi-Chang Liu (Department of Ecological Humanities, Providence University), Immersing environmental education into ecotourism: stepping stone for Kinmen toward to sustainable development. (劉奇璋, 環境教育融入生態旅遊: 金門邁向永續發展的踏腳石, 靜宜大學生態人文學系)

Si-Min Lin (Department of Life Science, National Taiwan Normal University), The fertile biodiversity in the demilitarized zone: wildlife management on Kinmen Islands. (林思民, 豐饒的生物多樣性: 戰後金門的野地資源與管理, 國立台灣師範大學生命科學系)

Weng Tzu-Pao (Director-General of the Economic Affairs Department, Kinmen County Government), Sustainable Development Measures and Reflection on Island Globalization – The Example of Kinmen County Conceptual Master Plan. (翁自保, 島嶼全球化之永續發展對策與省思-以金門縣概念性總體規劃案為例, 金門縣政府建設處處長)

F-4 Heritages and development (Chair: Bowei Chiang, National Taiwan Normal U. 江柏煒教授)

Zhi-Jun Li (College of Humanities, Xiamen University), The Location of Marine Political Geography And the Governance of Qing Dynasty for the Penghu Sub-prefecture: Based Mainly on State Bailout of Storm Damage. (李智君, 海洋政治地理區位與清政府對澎湖廳的經略: 以風災的政府救助為中心, 廈門大學人文學院歷史系)

Chung-yu Chen (Institute of History and Philology), The prehistory of Matsu archipelago and Liangdao Man. (陳仲玉, 馬祖列島的史前文化與『亮島人』, 中央研究院歷史語言研究所教授)

Chao-Ching Fu (Department of Architecture, National Cheng Kung University), The Sustainable Strategy of Matsu's Military Cultural Landscapes as Creative Spotlight Sites for Cultural Tourism. (傅朝卿, 馬祖戰地文化景觀作為文化觀光創意亮點之永續策略, 國立成功大學建築系特聘教授)

Chaur-Giun Chen (Director-General of the General Affairs Department, Kinmen County Government) From Cold War to Change – Kinmen's Past, Present and Future. (陳朝金, 從冷戰到蛻變: 金門的過去、現在與未來, 金門縣政府行政處處長)

F-5 Ocean and coastal monitoring models (Chair: Jia Wei Tang, NPU., 唐嘉偉助理教授)

Shyang-Chyuan Fang (Dept. of Tourism and Leisure, National Penghu University of Science and Technology), Application of Structural Equation Modeling to Predict the Impacts on Ecosystem for Bridge Reconstruction Across Islands in Penghu, Taiwan. (方祥權, 以結構方程模式進行澎湖海域長期資料的生態系模式建構與預測, 國立澎湖科技大學)

Shyang-Chyuan Fang, I-Cheng Chang, Tai-Yi Yu (Dept. of Risk Management and Insurance, Ming Chuan University), Analysis of Spatial Features of Coastal Oil Pollution using Multivariate Methods. (方祥權、張益誠、余泰毅, 運用多變量方法分析海岸油脂污染的空間特徵, 國立澎湖科技大學、宜蘭大學環境工程系、銘傳大學風險管理與保險系)

Yu-Jie Wang, Tzeu-Chen Han (Department of Shipping Management, Penghu University of Science and Technology), Developing sustainability evaluation model of Penghu: Considering inefficiency of undesirable factors by no-radial DEA. (王昱傑、韓子健, 國立澎湖科技大學物流管理系)

Su-Chang Chen, Sin-Ting Jeng, Kuang-Hui Li, Ji-Rong Huang, Yu-Tong Chen & Pei-Jyun Lu



ISISA Islands of the World XIII

Small is Beautiful: Island Connections and Innovations

Penghu Archipelago, Taiwan, 22-27 September 2014

(Dept. Marketing & Logistics Management, National Penghu University of Science and Technology), The Influence Factors on Students to Choose University of Penghu Islands in Taiwan. (陳甦彰、鄭心婷、李光惠、黃己容、陳昱同、盧佩君，影響學生選擇位於澎湖島嶼上之大學就讀因素研究，國立澎湖科技大學物管系系主任兼教務長)



Reception Session

Songs of Islands – Songs about island life and their lyrics

Facilitated by Anna & Godfrey Baldacchino, Malta

Oryu, Yoko (Kobe University, Japan). Contemporary Elegy of *Adieu Foulard, Adieu Madras* and French diaspora from the French Overseas Departments in the Caribbean.

Persoon, Gerard A. (Leiden University, The Netherlands). Frightened by the Eagle: Songs from the Island of Siberut (Indonesia).

Royle, Stephen A. (Queen's University Belfast, Northern Ireland, UK). 'Oh the Empire, it is finished' – 'England's got Rockall'.

Syaman Rapongan (Orchid Island, Taiwan). The Songs of Orchid Island - Flying fish and the Ballad of Tau.

R1

Contemporary Elegy of Adieu Foulard, Adieu Madras and French diaspora from Overseas departement of Caraïbe

Yoko Oryu, Kobe University, Japan Email: yoko.oryu@port.kobe-u.ac.jp

Adieu foulard, adieu madras is an old air of French West Indies. The farewell love song of Antilles in the days of steamers attracted islands visitors as well. In Metropolis, it has been spread through tremendous adaptations brought by for example Henri Salvador. However, it has not been well known that the histories of the Antilleans have been inscribed and have implemented décor on the air. They had sung it to bid farewell for over a half century, today rare Antilleans living both side of Atlantic Ocean break hush its exact notion up.

Guadeloupe and Martinique were taken as possession of France in 1635, were colonized for the use of Sugar cane plantation. It had been maintained by slave trade and slavery under Black Code. By the second decision of abolition of slavery on 27 April 1848, status of full-fledged French citizen was brought to the enslaved people. Guadeloupe and Martinique, with Guyana and Reunion as "vieilles colonies", become Overseas department by the law of 19 March 1946. In 1962 when French Government had come up with a new policy, Antilleans were called to immigrate to Hexagon -- Metropolitan France—in response to the recruitments of cheap labor. The issue of the slavery system in the past and the responsibility of the state over the system as popular interrogations have their root in the political movements of Caribbean African in Diaspora. Why has such a conscience been crystallized in the dawn of 21st Century?



This paper aims to explore the relation of contemporary Antillean with their histories through the song *Adieu foulard, adieu Madras*. Why today after 400 years ago, they don't stop talking about slavery and their heritage? To what extent was making of their identity correlated with evolution of an institutional framework "département d'outre-mer"? Finally this paper will give views to their collective reject of a concept "the diversity" to designate the French society.

To examine these questions the method used is interview. To focus on their experiences and their memories about the past and the present, the research invites them to talk their experiences through the impression about a song they shared, *Adieu Foulard, Adieu Madras*. It should be underlined that their different experiences with groups, generations of the immigration movement and their positioning in the contexte of social mutation are gravured alongside of the collective perception of the song. The paper discusses about the case with "womens movement", from the perception of the song, a long processus of the transformation of mind and social norms, which definitively turned in 1983, and the importance of the song as unique patrimony.

R2

Frightened by the Eagle: Songs from the Island of Siberut (Indonesia)

Gerard A. Persoon

Leiden University, the Netherlands. Email: persoonga@fsw.leidenuniv.nl

Singing is the most important element of the music culture on Siberut, the largest of the Mentawai Islands (West Sumatra, Indonesia). There are various types of songs on the island. Some of them are related to the world of spirits and ancestors. These are mainly sung by the medicine men during healing ceremonies and rituals. Other songs can be made by men and women during their daily activities, when they are fishing at sea or when they take a rest while collecting products from the forest. Various animals (birds, primates, reptiles) or natural forces (wind, thunder) can inspire people to think of lyrics and melodies. The same counts for special events such as the arrival of a logging company on the island. People also sing while mourning after the death of a relative. Songs and lyrics are learned through imitation and so-called cueing. In this way songs can spread all over the island. In recent years



young islanders also transform some of the traditional songs into what they love to call 'Pop Mentawai', by adding modern instruments and new rhythms.

In this paper I will discuss the songs and lyrics that were compiled and recorded over an extended period of fieldwork on Siberut. This production of a CD with traditional music, and its presentation in the community also led to a discussion about how music is actually defined.

Oh the Empire, it is finished' – 'England's got Rockall'

Stephen A. Royle, Queen's University Belfast, Northern Ireland, s.royle@qub.ac.uk

Rockall is a granitic knoll of 784 sq m in the North Atlantic, 370 km from inhabited land. It has no economic value but was a prize when it was thought possession could command an exclusive economic zone. Iceland, Ireland and Denmark laid claim, whilst the UK annexed Rockall in 1955 and in 1972 declared it to be part of Scotland. However, the United Nations Convention on the Laws of the Sea (1982) precluded rocks incapable of supporting life to be awarded economic zones. Interest in Rockall then reverted to symbolism, especially its occupation by Greenpeace in 1997 when the global state of Waveland was declared from its 21m summit.

Disputes over island sovereignty can be serious, especially in Asia, with sabre rattling between nations battling for island territories. Regarding Rockall, the saga resembled more comic opera than high politics with people competing to see how long they could 'live' strapped to the rock to boost various national and micronational claims. It was not all Ruritanian; ownership of Rockall got entangled with the Cold War when its possession was deemed necessary to secure the UK's missile testing site on the Western Isles, Rockall's distant if nearest neighbour.

An element in the sovereignty dispute was song. Two were especially significant. The 1950s was an era of post-war decline in the UK: the empire was fading; the Suez Crisis happened; Prime Minister Macmillan was to speak of the 'winds of change'. However, in 1955 in its last imperial act the UK annexed Rockall, an action parodied by the comedic duo (Michael) Flanders and (Donald) Swann in *Rockall* (1956):

Though we're thrown out of Malta,
Though Spain should take Gibraltar,
Why should we flinch or falter



When England's got Rockall.

There was another target to the satire for 'Rockall' was pronounced in the last line to sound like a rude way of saying England had nothing, a line which passed the censors then still operating. As Swann put it, "the lyric looked innocent enough written down..."

In addition to satire, songs can also convey political messages as with Rock On Rockall (1973) by the Irish band, The Wolfe Tones. Their name commemorates Wolfe Tone, leader of the 1798 rebellion against English involvement in Ireland and the band is an Irish institution after decades of performing in the nationalist tradition. They sang that although the British Empire was finished, the 'greedy eye of England' was turning to Rockall, only for the band to warn 'keep your hands of Rockall; it's Irish to the core'.

These may not be 'island songs' being about rather than from Rockall and they have other messages: loss of empire, Irish nationalism, even a swipe at censorship, but the story they illustrate sings to the situation of other disputed islands, populated and otherwise.

MacDonald, F (2006) 'The last outpost of Empire: Rockall and the Cold War', *Journal of Historical Geography*, 32.

Royle, S.A. (forthcoming, 2014) "'This mere speck on the surface of the waters": Rockall a.k.a. Waveland', *Shima*.



The Songs of Orchid Island - Praise the ocean / Syaman Rapongan

海洋的禮讚

Praise the Ocean

夏曼·藍波安

Syaman Rapongan

Raodan ko pala o icakalamat na I malowaji
讓我們為廣袤汪洋歌唱
Let's praise and sing to the vast ocean

a iloyib do minalowalovang rana
以及為多樣豐腴的魚類歌唱
As well as to the diverse and abundance fish

o sominayisayi Jilangaraen na
從淺灘到無垠的海平線
From the shallows to the expanse of the sea horizon

iya lovalovang no analasan no valay
讓我們民族世世代代繁衍
Let our people grow sustainably

a jita tomilavoyi do pozo ya
讓我民族的韌性如巨岩般的結實
Let our islanders' resilience become as strong as rock

jita I yavavakogi a asa minijid
我們如此歌頌海洋之魂
We praise the spirits of the ocean.



ISISA Islands of the World XIII

Small is Beautiful: Island Connections and Innovations

Penghu Archipelago, Taiwan, 22-27 September 2014

General Information

The Venue:

“The Most Beautiful Bays in the World”

Headquartered in central France, the Most Beautiful Bays in the World was founded in 1997. Among the 39 bays which are recognized by the organization are San Francisco Bay, Qingdao Bay, Ha Long Bay, etc. This international NGO supported by the United Nations Educational, Scientific, and Cultural Organization works to preserve natural resources, i.e. the world’s bays. The organization is constantly on the lookout for new partners in its work to grow across the globe, and through individual and group action seeking better water and resource management and a balance between human activity and symbolic scenic areas.

The Penghu Archipelago consists of some 90 islands. Penghu’s coastline extends 448 kilometers, covering a total land area of 127 square kilometers. The scenery created by the archipelago’s unique ocean geology has influenced and interwoven with local culture, adding to the splendor of our bays. Our long-term effort to conserve the natural resource is that our bays have won the approbation of the “Most Beautiful Bays in the World”, and Penghu has been a formal member of the organization since a recognition ceremony in Paris on November 12, 2012. Penghu will conduct exchanges and cooperate with other members on oceanic environment management, bay culture preservation, and other related issues. This will increase Penghu’s international visibility and bring our fair archipelago onto the world stage, helping to meet a founding principle of The Most Beautiful Bays in the World.





Penghu Archipelago

Penghu is located on the Taiwan Strait between China and Taiwan in Asia. It is the only island county of Taiwan. When the tide is on the ebb, more than one hundred isles appear. Therefore, the number of the total isles varies. Generally speaking, at a rising tide, 90 isles are scattered between north latitude $23^{\circ} 12'$ to $23^{\circ} 47'$ and east longitude $119^{\circ} 19'$ to $119^{\circ} 43'$. The utmost east isle is called Zhamu Isle, the utmost west isle Hua Isle, the utmost south isle Chi-mei Isle, and the utmost north isle Dogiao Isle. The utmost west isle is also the utmost west boundary of Taiwan. Something unusual about Penghu isles is that the Tropic of Cancer goes through Hoojing Isle, one of the 90 isles.

The Penghu archipelago scatters all over the ocean and extends around 60 km north to south, 40 km west to east. The total area of the 90 isles is around 127.9636 square kilometers. Among the isles, 19 are populated and the total area is 124.9392 square kilometers. However, 71 isles are not inhabited and the total measure of the area is 3.0244 square kilometers. The biggest isle is Magong Isle, and another 4 big isles in the order of size are Yuweng Isle, Baisha Isle, Chi-mei Isle and Wang-an Isle.

Its geology is made by the Pleistocene volcanism and is formed by pluton of andesite and pluton of basalt. Some rock layer formed after the last phase of the tertiary period is also mixed up within. As to the structure of it, penghu layer can be divided into 4 groups. From the newest to the oldest, they are seashore pile-up layer, Husi layer group, and the hua isle made by silicon rock layer is even older. It is the rock body of the Paleozoic era to Mesozoic era. And the layer which most penghu people inhabit is mostly yuweng layer group.

National Penghu University of Science and Technology (NPU)

Address: 300, Liu-He Rd., Magong City, Penghu County, Taiwan, R.O.C.

Tel: +886-6-9264115 Fax: +886-6-9278912

Website: <http://www.npu.edu.tw>

Brief School History

1991: Penghu Branch of Kaohsiung Marine Academy

1995: National Penghu Marine Academy

2000: National Penghu Institute of Technology

2005: National Penghu University of Science and Technology



Academic Development

NPU is a comprehensive university of technology that is committed to research areas of aquaculture, leisure and tourism, and green energy. NPU emphasizes the link and cooperation between local industries and practical teaching to empower our students with world visions, creative thinking, and professional skills. This ensures that NPU graduates meet the needs of the fast growth of national economy and local industries.

NPU forms close partnerships with local businesses and industries, and puts a lot of emphasis on the connection between theory and practice. NPU provides a supportive living environment that encourages students to connect with others who share a similar academic program or interest area. Besides, NPU allows easy access to campus facilities, as they are often in close proximity to classes and offices related to the student's program of study or interest area.

NPU has a low student-teacher ratio to benefit our students by increasing student achievement, enhancing student academic performance, and providing lasting academic benefits. Teachers and staff at NPU are more than happy to help our international students with all the issues and problems they might face at school for a smooth transition to university life.

Concerning academics at NPU, there are several one-of-a-kind programs that showcase the local industries, including the green energy, tourism and leisure, marine sports, and the Penghu Summer School programs. Experienced professors and experts from various fields come together to design and teach these courses.



Service

1. Pick up service at Tao-Yuan International Airport (Taipei)

The local organizer will arrange a free pick up service at Tao-Yuan International Airport (Taipei) on Monday, September 22nd. The pick up service will provide transportation from the airport to National Taiwan University (NTU) Guest House–Just Sleep.

Please inform us of your arrival time and flight number at your earliest convenience.

2. Accommodation in Taipei

All participants who have booked accommodation in Taipei through the local organizer will stay at the NTU Guest House. For more information about the hotel, please visit the web site: <http://www.justsleep.com.tw/NTU/en>

3. Domestic flight from Taipei to Penghu

Airports:

Taiwan Taoyuan International Airport (TPE): <http://www.taoyuan-airport.com/english/Index/>

Taipei Songshan Airport (Domestic airport) (TSA): <http://www.tsa.gov.tw/tsa/en/home.aspx>

Penghu Magong Airport: <http://www.mkport.gov.tw/english/include/index.asp>

All participants who have booked local flight tickets from Taipei to Penghu by local organizers will take the flight departing at **10:35 am on Tuesday, September 23rd** (Mandarin Airlines). The flight will depart from Taipei Songshan Airport. There will be a free bus service from the NTU Guest House to Songshan Airport. The bus will depart at **8:30 am** from the NTU Guest House. There is also a free bus service from Magong Airport to the Pescadores Hotel, Penghu.

4. Accommodations in Penghu

All participants who have booked accommodation in Penghu through the local organizer will stay at the Pescadores. For more information about the hotel, please visit the web site: <http://www.pescadoresresort.com.tw/>.

5. Registration

On-site registration for the guests of ISISA Islands of the World XIII (Small is Beautiful: Island Connections and Innovations) will take place in the main building of National Penghu University of Science and Technology. The open hours of the registration desk are:

- Tuesday, 23rd September 1:30 p.m. until 2:00 p.m.
- Wednesday, 24th September 8:30 a.m. until 9:00 a.m.
- Thursday, 25th September 8:30 a.m. until 9:00 a.m.



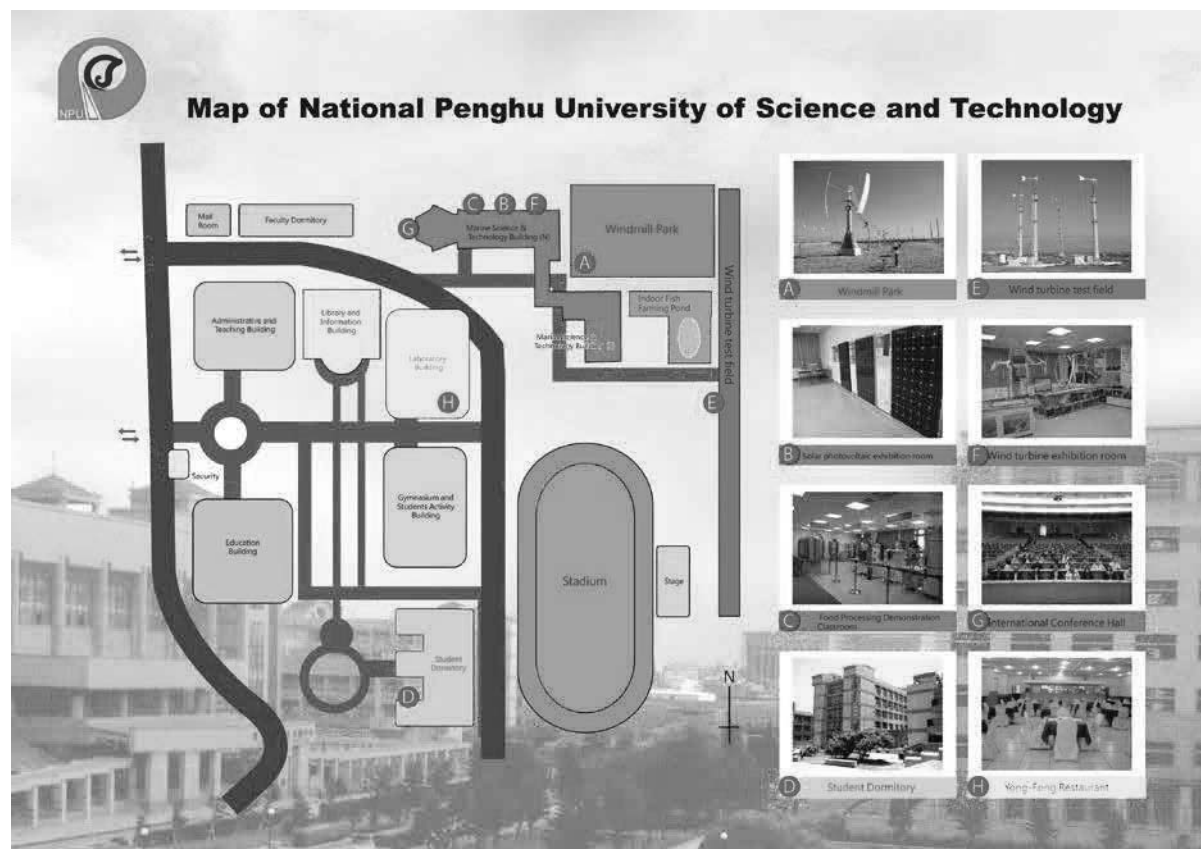
6. Meeting Venues

Conference venue:

NPU: <http://english.npu.edu.tw/>

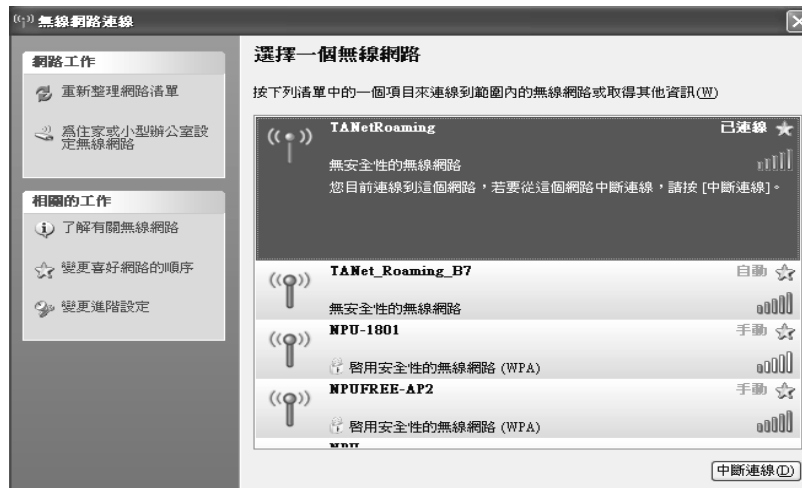
<http://2014isisa.npu.edu.tw/island/>

The conference will be held at National Penghu University (NPU), Penghu, Taiwan. The school address is: No.300, Liu-he Rd., Magong City, Penghu County 880, Taiwan (R.O.C.). The Opening Ceremony and the Closing Ceremony will take place in the Marine Science & Technology Building of NPU, and the Congress Dinner will take place in the Pescadores Hotel.



7. Internet access

Free Wi-Fi internet access is available to all participants. A code accessing the university's Wi-Fi will be provided to each participant during registration. Depending on the intensity of use by conference participants, the speed of the Wi-Fi connection might be suboptimal in peak hours. (the code is from isisa001 ~ isisa200, and will be shown on each participant's ID card).



8. Domestic flight from Penghu to Taipei

All participants who have booked local flights from Penghu to Taipei will take the flight departing at **16:30 p.m. on Saturday, September 27th** (Mandarin Airlines). There will be a free bus service from National Penghu University of Science and Technology to Magong Airport. There will also be a free bus service from Taipei Songshan Airport to Howard International House, Taipei.



9. Field trip (Sept. 24th & Sept. 26th)

The field trips to Penghu Main Island culture & Nature Site Visits and Chi-Mei Island are scheduled on Sept. 24th and Sept. 26th respectively. Participants will take a bus to Penghu Main Island at 15:00 pm on Sept. 24th, and to Chi-Mei Island by ship at 8:30 am on Sept. 26th. The detailed information will be available at the conference venue.

10. Taxi service

If you need a taxi service in Penghu, please contact our staff at the service center or call the number: + 886-6- 9273388 or +886-6-9272955

11. Poster Exhibition – 20 years of ISISA

There will be a “Poster Exhibition – 20 years of ISISA: From Okinawa to Penghu” at the Marine Science and Technology Building of NPU during the conference period.

12. Contact Persons

Dr. Shi-Liang Yu, National Penghu University, Taiwan: slyu@gms.npu.edu.tw

Cell Phone: +886-988-215-578

Dr. Jia-Wei Tang, National Penghu University, Taiwan: jiawei@gms.npu.edu.tw

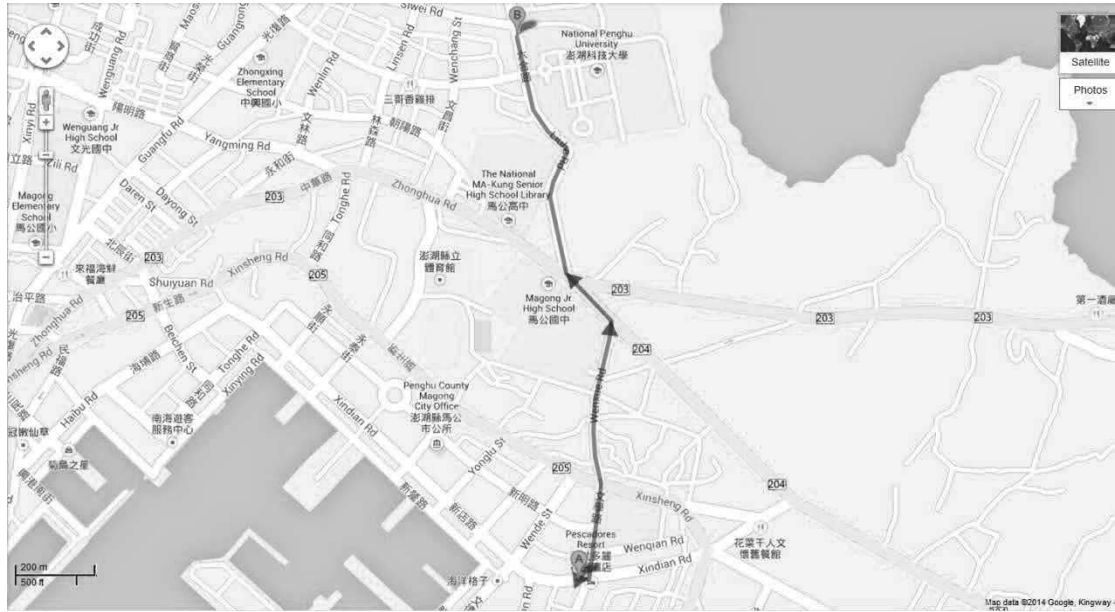
Cell Phone: +886- 931-937-060

Dr. Huei-Min Tsai, National Taiwan Normal University, Taiwan: hmtsai@ntnu.edu.tw

Cell Phone: +886- 933-921-658



MAP (Location of Hotel & Conference Venue)



Field Trip I

Nature-culture tour on Penghu main island (Sept. 24th)



(Map source: Penghu National Scenic Area Administration, Tourism Bureau, Ministry of Transportation and Communications, ROC)

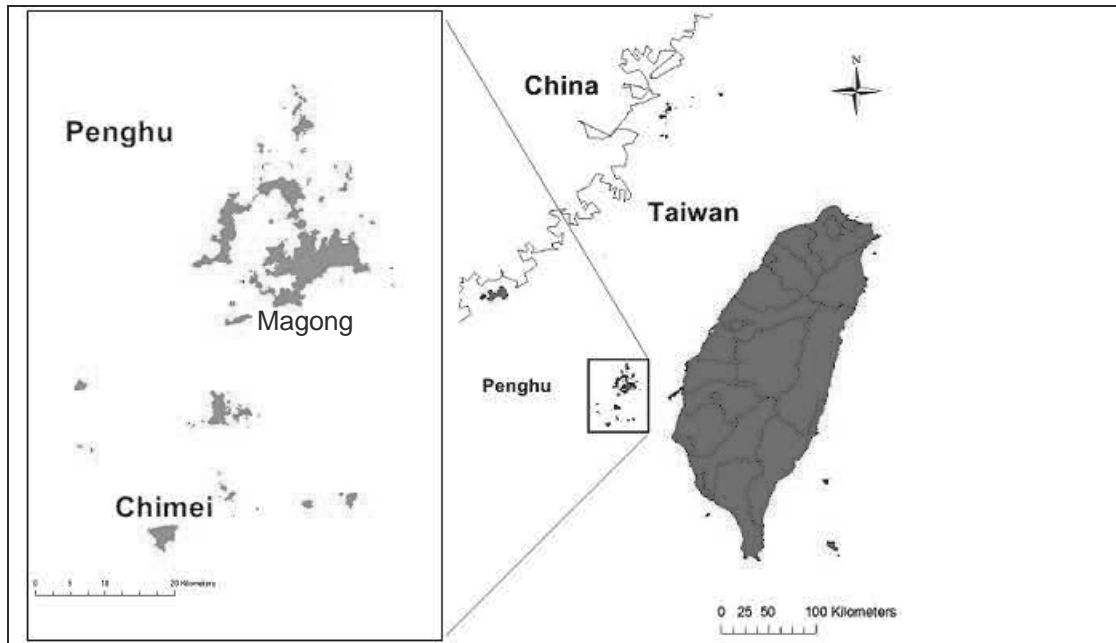
Time	Place	Activity Schedule	Remark
15:00-15:30	Penghu Living Museum	Penghu Living Museum is the first city museum in Taiwan. To make the exhibits close to real life, real specimens, documents, images, ecological landscaping, and miniature models are presented; virtual reality and multimedia are alternately applied.	
16:00-16:30	Tongliang Great Banyan Penghu Great Bridge	In front of the Baoan Temple in Tongliang Village, there is an old Banyan dated over 300 years, it is the oldest and largest tree in Penghu, with a total of 95 aerial feet, circling a square for people to rest under its	



		<p>shadow in front of the temple.</p> <p>The Penghu Great Bridge is 2,494 long. It strides above the Houmen Waterway between Baisha and Xiyu Islands.</p>	
16:30-17:00	Erkan Historical House	<p>Towards the end of Ming Dynasty, Mr. Chen Yanyi came to Penghu across the sea from Kinmen, came ashore at today's Dachih Village and went into fishery.</p>	
17:00-17:30	Daguoye Columnar Basalt	<p>During the Japanese occupation, a wharf was planned to be built at the seaside of Daguoye to improve marine communications between Magong Island and Xiyu. While the workers were digging earth and stones away, they found the impressive columnar basalt which had been buried and had been in sound sleep for thousands of years. We can say that it is the most accessible columnar basalt in Magong Island.</p>	
18:00-	Aimen Beach	<p>If the Shan-Shue Beach is Golden Sand, then Aimen Beach is the most romantic Love beach. There are not many visitors on Aimen Beach in common days. You can see a pavilion where visitors can have a rest, and moving forward, you will see that the white beach melts into the blue sea and sky. At Aimen Beach, you can enjoy BBQ.</p>	

Field Trip II (Sept. 26th)

Chimei Island: Adaptation and Innovation on the Small Island



Location of Chimei Island in Penghu Archipelago



Friday, September 26, 2014

- 08:00 Buses depart from Pescadores Hotel
- 08:30-10:00 Boat trip to Chimei (Sightseeing: small islands on the sea)
- 10:00-10:20 Nanhu Port, Bus services
- 10:20-11:20 The Origins of culture in Chimei and its linkage to the world,
Seven Beauties Tomb / Nankang Prehistoric Lithic Workshop
- 11:20-11:50 Basalt and formation of the island- Chimei Yueli bay
- 12:00-13:00 Lunch: Reception at Senior Citizens' Activity Center, Zhonghe Village
 - * Lunch- local cousins
 - * Exhibition: local art, cultural and creative items
 - * Dayu Cultural & Lifestyle Museum
 - * Meet with local people and the research team of Chimei's development planning
- 13:00 -14:30 Island Community Forums
- 14:30-15:00 Innovations for the sustainable future- Solar Energy Park / Reservoir & proposed Nature School



- 15:00-15:30 Island livelihoods, adaptation and traditional knowledge: “Lungcheng” and “Little Taiwan” (wave-cut platforms) /Twin Hearts Stone Weir (stone fish weirs in the intertidal zone) / Caizhai (stone-walled vegetable gardens)
- 15:30-16:00 The transformation of fishery and seafood in Chimei Nanhu Port in Chimei: From coastal and offshore fishery to far-sea fishery and abalone aquaculture
- 16:00-17:30 Sunset cruise heading back to Magong



Visiting sites on Chimei Island



ISISA Islands of the World XIII
Small is Beautiful: Island Connections and Innovations
Penghu Archipelago, Taiwan, 22-27 September 2014

